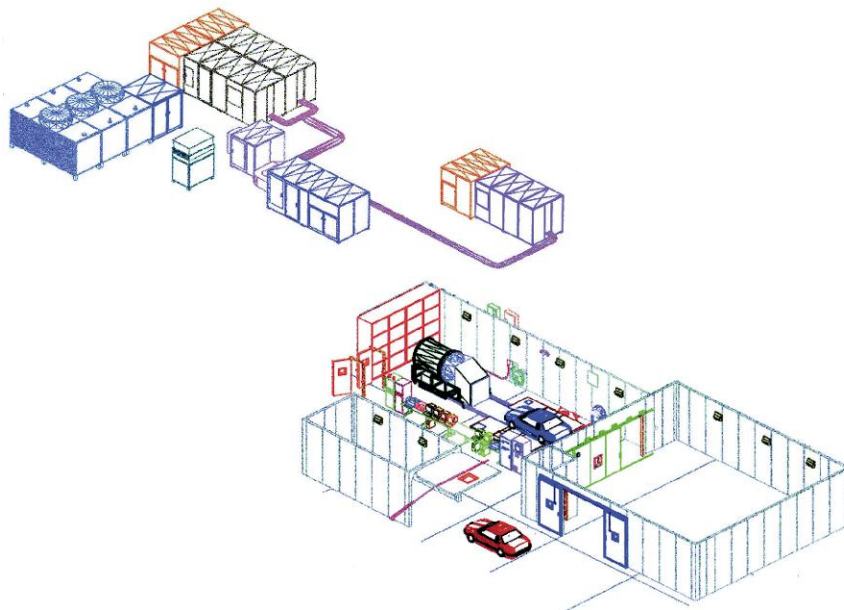




SieTech is an engineering-based supplier of systems, software and integration services for environmentally controlled testing facilities, laboratories, test chambers and industrial processing. Formed from select engineering personnel, SieTech combines years of experience with a strong desire to develop the most advanced and comprehensive systems possible. Our ability to conceptualize a project from the ground up, our innovation of design, and a keen eye for detail set us apart from others in our industry. Because we concentrate solely on custom-design we can push the boundaries of current technology in pursuit of simple solutions to difficult problems. Our approach not only benefits the systems we design, but ultimately the end user.

No project lies outside our scope. From the smallest system control upgrade to the largest multi-chamber, multi-function testing facility, SieTech has the experience and expertise to accomplish your goals. Our commitment to continuous improvement requires the flexibility to expand what we know in pursuit of engineered solutions for any complex problem. This, combined with our experience in controlled environments, has allowed us to design and integrate equipment for a wide variety of applications that could not have been realized using only the standard methods of the industry.





*Systems Integration & Engineering Technologies*

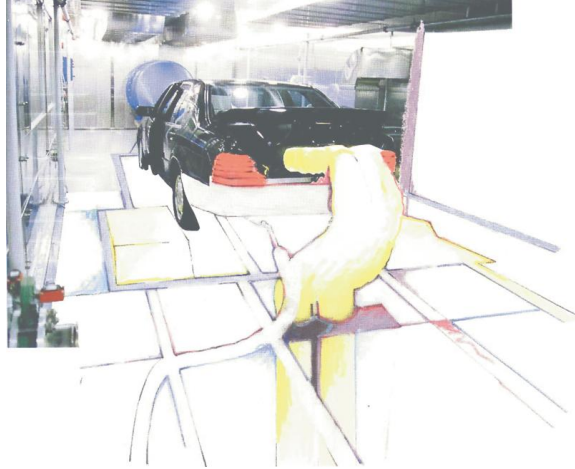
### ***International***

At SieTech we are always applying what we learn from our international experiences. Large or small, foreign or domestic, we know that every stage of every project is important. All of our people have international experience in the field and know the value of a well designed, manufactured and executed job. We know that attention to minute detail is not a just a selling point but a requirement. Whether a product's final destination is across town or across time zones the key to its success is always proper design and execution.

SieTech's approach to international relationships is not just about high technology. It is also about people. The nature of our business often requires us to spend long periods of time in cultural environments other than our own. We put forth every effort to observe not only the technical fine points of each project, but also the cultural surroundings that each project takes us to. Understanding the social, as well as the technical aspects of each endeavor ensures a pleasant and successful experience for both our selves and our customers.

SieTech is working to open new doors every day. We continue to avidly explore markets in Europe, Asia, South and North America. We are proud of never having shied away from a new challenge or a new idea. From Aerospace, Bio-technologies and pharmaceuticals to industry, storage and software, SieTech continues to explore every option available in the pursuit of new markets, new ideas and new solutions to the diverse needs created by a diverse world market.



***Environmental Control***

Temperature/Humidity Stability/Rate/Extremes  
Wind Speed Simulation  
Rain/Snow Generation  
Solar/Thermal Radiation Simulation  
Salt Fog/Particulate Agitation  
Conditioned Make-Up Air

***Equipment Types***

Internal/External Air Handling Systems  
Chamber Panel Systems  
Sealed Enclosures  
Wind Tunnel Equipment  
High/Medium/Low Temperature Compressor Packages  
Multi-Stage Cascade Refrigeration  
Liquid Nitrogen/Carbon Dioxide Expansion  
Standard/Extended Range Fluid Conditioners (Chillers)  
Computer Equipment  
Controls Networks  
Analytical Benches/Data Acquisition Systems  
Solar Arrays  
Thermal Emissions Panels  
Dynamometers  
Vibration/Shock Simulators

***Turn-Key Systems***

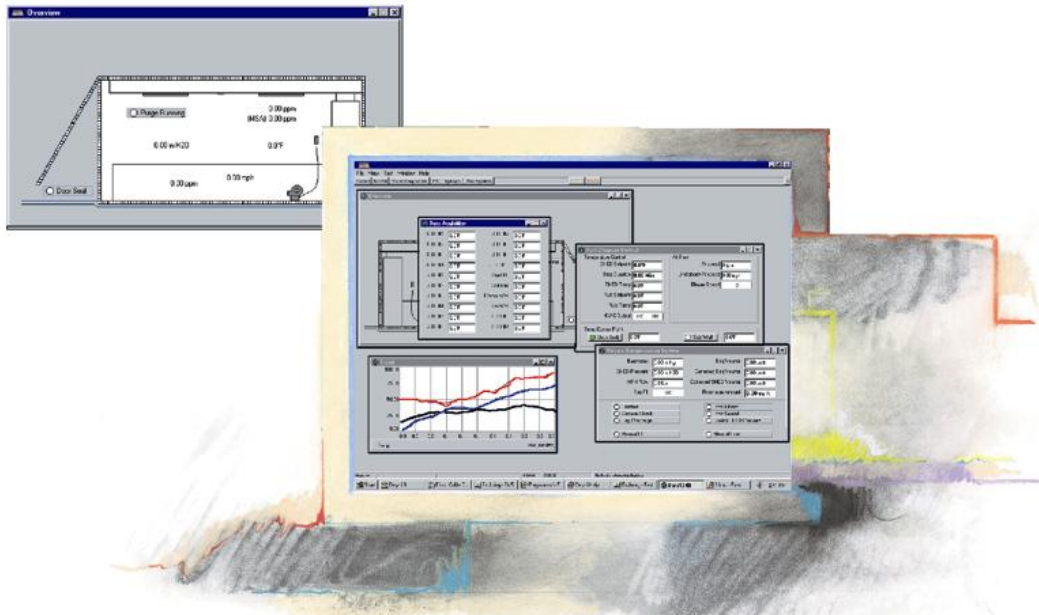
Engineering  
Integration  
Manufacturing  
Supervision  
Installation  
Commissioning  
Testing/Training

# SIM

## *SIM Software*

SieTech has developed the SIM software package that is not only the ideal solution for climate-controlled test chambers and facilities, but is also well-suited for uses such as process controls, automation, laboratory management, and equipment status control. System functions and components containing independent and co-dependant sequential processes, repetitive cycles, programmable event driven operations, specialized reporting, and advanced control elements can be overseen by SIM. With this software package, the end-user is able to design test profiles that range from simple stored setpoints to complex testing and operational procedures running for weeks at a time. Calibration of sensors and measuring devices, monitoring of facility, equipment and component status, and even corrective measures can be accomplished from the same control station thus ensuring all processes are consistent and repeatable.

Testing and controls automation profiles such as process sequencing, ramp and soak or multiple test sequences can be designed and run through the SIM software, as well as trend graphing and data collection criteria specific to the user's needs. Because this software has been developed by SieTech for use with custom test systems, it can be easily modified to incorporate specifications for testing, recording and data collection. The user's data can be automatically saved at the end of each test, printed and/or sent to another computer for storage. Troubleshooting and help files resident to the computer discuss the operation of your equipment at the user and technician level.



SIM runs on Windows, a platform that is familiar to most technicians and engineers. The interface is comprehensive and usable, and can be configured to the needs of each user even as those needs change.

- Units of measure can be selected on a field by field basis.
- Display labels for data points can be renamed to indicate exact usage.
- Format and period of logged data can be configured to meet the needs of your data manager.
- Report structure can be defined on a per test basis.
- User definable displays are available.
- Trends can be completely customized.

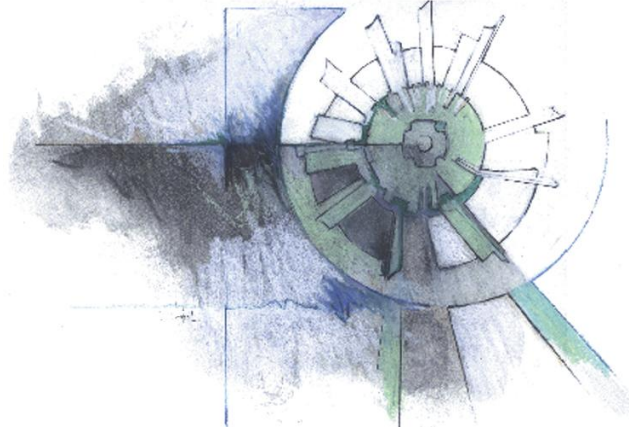
SIM supports nearly any type of test equipment

- Data acquisition systems
- Dynamometers
- Analyzer benches
- Calibration equipment
- Third party environmental systems
- Facility control packages

SieTech programmers built SIM software from the ground up. SIM is built not from separate pieces purchased from outside vendors, but rather from solid modules designed to work together. Each module is coded in languages such as C++ and PASCAL therefore allowing SieTech complete control over the quality of each software package.

SIM is designed specifically for integration with third-party systems, and currently supports the following standard industry protocols.

- AK
- TCP/IP
- ModBus
- DF1
- DH+
- DH485
- GPIB



#### ***Simulated Environment Engineering and Design***

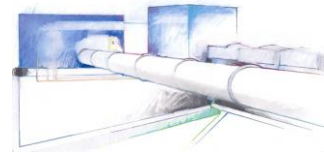
SieTech has designs for the future. Our years in the field have showed us the benefits of engineering a system for future contingencies as well as current needs. We know the cost of a new test system, and that it should be designed to evolve with the customer's needs, and not to be replaced. SieTech provides turnkey solutions or subcontracted services for nearly any type of environmental simulation and testing.

#### ***Software Engineering and Design***

SieTech provides custom software solutions for many applications. We design systems to be user friendly, reliable, flexible and above all, compatible. We build to new specifications, or provide upgrades and enhancements to existing equipment and interfaces. SieTech has software for climate control, process control, testing automation, analytical integration, data acquisition and many other specialized applications.

#### ***Existing Equipment Service***

If your existing equipment is no longer performing up to par, or is unable to meet your current needs, SieTech can evaluate your system before you decide to purchase an entirely new system. Often relatively small modifications are required to make a system perform to a new set of specifications. We will use our knowledge and experience to understand your equipment as a system, not just a series of individual components. SieTech is always developing new technologies, and has many ways of making existing equipment function more efficiently, more reliably and to a wider set of specifications.



### *Services*

SieTech's primary function is system integration engineering. We are uniquely suited to the task of integrating all individual systems and components of a successful testing facility into a single operational package. Too often cooperation and communication among numerous vendors and subcontractors becomes inadequate. While systems and components function well individually, making them function *together* is left to the customer. SieTech's solution is to form a partnership with the end user that provides support every step of the way. We work with you and your vendors to ensure that your project proceeds smoothly and that your system, when complete, provides the reliability and service that you require.

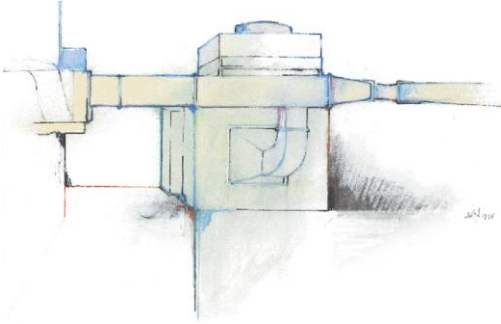
SieTech's engineering services can be applied to nearly any type of environmental test chamber, system or software imaginable. We have designed specialized, custom equipment for automotive and product testing, production lines, cold and ultra-cold storage, reach-in, walk-in and drive-in chambers for everything from aerospace and electronics to self-contained, portable, temperature-controlled, walk-in laboratories. We provide consistent programming and interfaces and integrate all available parameters and features from every device so that the customer with the right equipment may never have to touch the underlying system.



*Systems Integration & Engineering Technologies*

### ***Applications***

Laboratory Automation, Scheduling, Reporting, and Records Storage  
Process Automation and Control  
New/Existing/Third Party Equipment Controls  
Data Acquisition/Analytical Equipment  
Cryogenic Biological/Chemical/Records Archive Storage  
Instrument Calibration and Certification  
Environmentally Controlled Manufacturing  
Climatic Wind Tunnel  
Electronics EMI/RFI/ESD Testing  
Hazardous Materials Storage and Dispensing  
Durability/Stress/Shock Testing  
Appliance Certification  
Engine/Vehicle Emissions Testing  
In-Process Environmental Conditioning  
Military Ordinance/Specifications Testing  
SHED/Running Loss/ORVR Evaporative Emissions Testing  
FTP/SFTP/Cold CO Certification  
Plant Growth/Animal Development Research  
Vapor/Pollutant Removal  
Solar/Thermal Radiation Tolerance Testing  
Corrosion/Particulate Tolerance Testing  
Rain/Snow/Ice Buildup Testing  
High Temperature Curing/Baking  
Equipment Soaking/Temperature Profiling  
Temperature Controlled Subsystems for Machining



## **SieTech, Inc.**

**PO BOX 1377  
Holland, MI 49422-1377**

**Phone: (616) 931-3995  
Fax: (616) 392-3091**

**Visit our website at <http://www.sietech.com>**